

# COMPANY PROFILE



## SUBSEA100 GLOBAL LIMITED



Contact: +234 84 555 226, +1 832 5700 563

Email : [info@subsea100.com](mailto:info@subsea100.com)

Website : [www.subsea100.com](http://www.subsea100.com)



## WELCOME TO **OUR COMPANY**

Subsea100 Global Limited is a Survey and Construction Support Company incorporated in January 2012, registered as an indigenous company in Nigeria with a global presence in Houston Texas, USA to provide services to the Oil & Gas Sector.

Our head office is situated in Port Harcourt, Nigeria.

We have benefited from the high level of experience of our executive management team and network which has earned us a vast record of accomplishment that exhibit professional experience in a variety of subdivisions.

We have an impressive pool of well-seasoned Engineers, Surveyors, ROV techs/Pilots, AUV operators/Tech, GIS Analyst, Data Management, and QA/QC etc. Our services are provided with functionality and safety as key factors. We consistently achieve this by utilizing top of the class equipment. These services are, but not limited to Data Acquisition and Interpretation of Seabed Features such as mapping with: Geophysical Engineering Survey, Seismic (Nodes & Streamers), Aerial experienced Drone Pilots, Positioning Engineering of Shallow and Deep-Water Installations, Remote Monitoring Systems for Rig Construction, Survey Support and Monitoring during Topsides and Subsea Moves, Tow-out of Structures, and Prefabricated Pipeline Bundles; the installation of platforms and jackets; the placement of Subsea infrastructure; and the trenching of pipelines, etc.



## COMPANY **ABOUT US**

Our Goal is to prioritize and commit to quality, health, safety and environmental high standards while maintaining impeccable integrity and saving time and money to the satisfaction of our clients. We work closely with our clients to establish the parameters and objectives of their projects, also contributing vast international experience of Inspection, Repairs & Maintenance, and decommissioning projects.

Our Aim is to provide a wholly integrated set of disciplines capable of performing the most challenging of remote inspection and intervention techniques with precise positioning, latest inspection technology and modelling services. Our construction support services are designed to address marine installation, construction, and maintenance activities across the entire field.

## 01. OUR CUSTOMERS

Our customer's satisfaction is our number one priority, and all efforts will be made to ensure customer needs are met and exceeded each time, by listening and using customers input to improve quality while in compliance to regulations and standards. Services will be provided timely and at very cost friendly terms competitive with industry standards.

## 02. OUR PEOPLE

Our commitment to our staff is to ensure job satisfaction by guaranteeing:

- Professional training to ensure continuous development of employee's talents and competence.
- Motivate employees towards achieving company's goals by industry competitive compensation, profit sharing and bonuses, and
- Maintain work life balance with a safe & conducive working environment.

---

## 03. HEALTH & SAFETY

Every risk factor is expertly determined, assessed and adequately mitigated as low as reasonably practicable, as our focus on safety can be compared only to the best in the industry with an objective of zero safety incidents.

## 04. ENVIRONMENT

Our belief in maintaining a safe environment is ensured by being environmentally responsible and observing environmentally safe practices in all our operations.





# TABLE OF CONTENT

No	Content Title	Page
01	Position Engineering	01.
02	Geophysical Engineering Survey	03.
03	Geotechnical Investigation and Benthic Analysis	04.
04	Data Processing	05.
05	UWILD Services	06.
06	Seismic Survey, UHR, Nodes and Streamers	07.
07	Dive Support	08.
08	Aerial Survey and structure Modelling	09.
09	AUV & HAUV Opera-	10.
10	Subsea Construction Support	11.
11	Acoustic Metrology and Well Marking	12.
12	Dynamic Lidar Solution and 3D scanning	13
13	Land Survey and Dimensional Control	15.
14	Marine Warranty Survey (MWS)	16.
15	Inspection Services	17.
16	ASV Operations	21.
17	Offshore Renewable Energy	22.
18	Geographic Information System (GIS) Services	23.
19	Our Equipment	24.

# POSITION ENGINEERING

## RIG MOVE

Moving a rig safely and smoothly requires real strength, precise preparation, and solid expertise. Subsea100 has a proven track record of excellence in offshore drilling, rig movements, the successful deployment of high- quality lead, and supporting tugs in moving across ocean areas. We make certain that our activities are carried out in accordance with all regulatory standards.

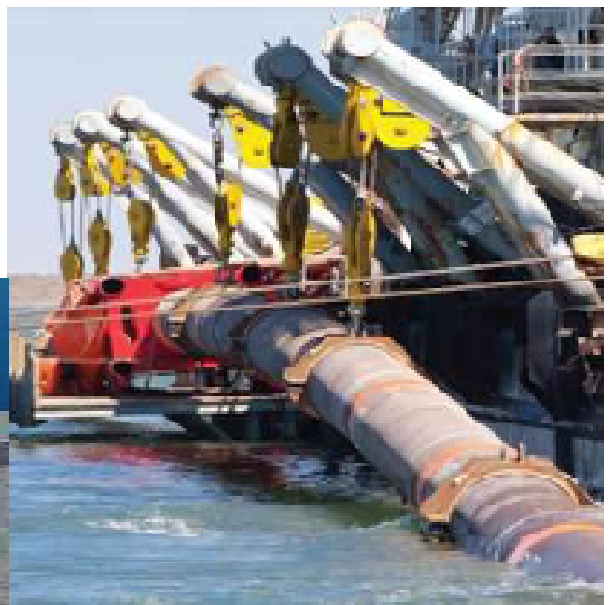


We provide accurate positioning; a fundamental parameter for all survey and engineering operations at sea. Our experienced team of specialists have completed numerous positioning projects ranging from shallow to deep water rig operations and developed advanced and robust survey and positioning solutions to support all offshore rig and mooring operations.

## PIPE LAY

We provide positioning and survey support for rigid and flexible pipe lay installation operations, along with jacket and deck installations. We provide integrated solutions of USBL (ultrashort baseline), Gyro USBL, LBL (long baseline), and/or INS (inertial navigation system) depending on the type of pipe, flexible pipe, or platform/jacket installation, either in shallow or deep water.

We specialize in positioning and navigation services for lay barges during pipe/cable lay operations, as well as AHT management. We support the entire pipeline laying process, from developing an appropriate route to positioning surface vessels, monitoring the pipeline's touchdown point, executing post-lay surveys, and reporting.



# POSITION ENGINEERING

## MOORING SUPPORT OF FPSO AND TUG MANAGEMENT

We distinguish ourselves by our extensive understanding of mooring design and offshore mooring operations. We offer a comprehensive solution that includes engineering, mooring design, procurement, and installation, as well as maintenance and decommissioning.

We understand how important it is for your FPSO and FSO units to be installed, moored, and operated smoothly and reliably. Uptime and predictability are critical. With effective solutions for on-vessel mooring, riser pull-in, and offloading, we assist clients manage the offshore installation and operating phase of their FPSOs and FSOs.

Other key services include:

- Survey and positioning support during FPSO installations
- Unmanned rig position monitoring systems
- Calibration of Rig Gyros





# GEOPHYSICAL ENGINEERING SURVEY

## Geophysical Survey Services:

01. Airborne Lidar Bathymetry (ALB) Cable Route Survey
02. Environmental Baseline Surveys and Habitat Assessment
03. Burial Assessment
04. Desktop Studies
05. Fisheries Habitat
06. Hydrographic Mapping
07. Support for Engineering Projects
08. Hazard Surveys
09. Inspection/Debris Search
10. Underwater Infrastructure
11. Wreck Survey
12. Dredging Analysis
13. Stock Piling
14. Dredging Channel Survey





# GEOTECHNICAL INVESTIGATION & BENTHIC ANALYSIS

We provide marine geotechnical services to determine and manage the ground risk associated with marine project development. Using technical expertise, advanced exploration tools, field and laboratory testing, computer simulations and quantitative methods, we identify, evaluate and resolve your geotechnical design challenges.

Our field data acquisition and sampling services are underpinned by our geotechnical expertise in executing complex and technically demanding projects.

Other key services include:

- Desktop studies
- Advanced laboratory soils and rock testing
- Soil and rock drilling
- Numerical and physical modelling of foundations
- Consultancy and Engineering analysis

From shallow coastal waters to ultra-deep-water ocean depths, our safe, cost-effective and technologically advanced geotechnical services include:

- Siting and stability of jack-up drilling rigs
- Foundation design for production platforms
- Slope stability analysis, mass flow simulation, and pipe impact assessments.



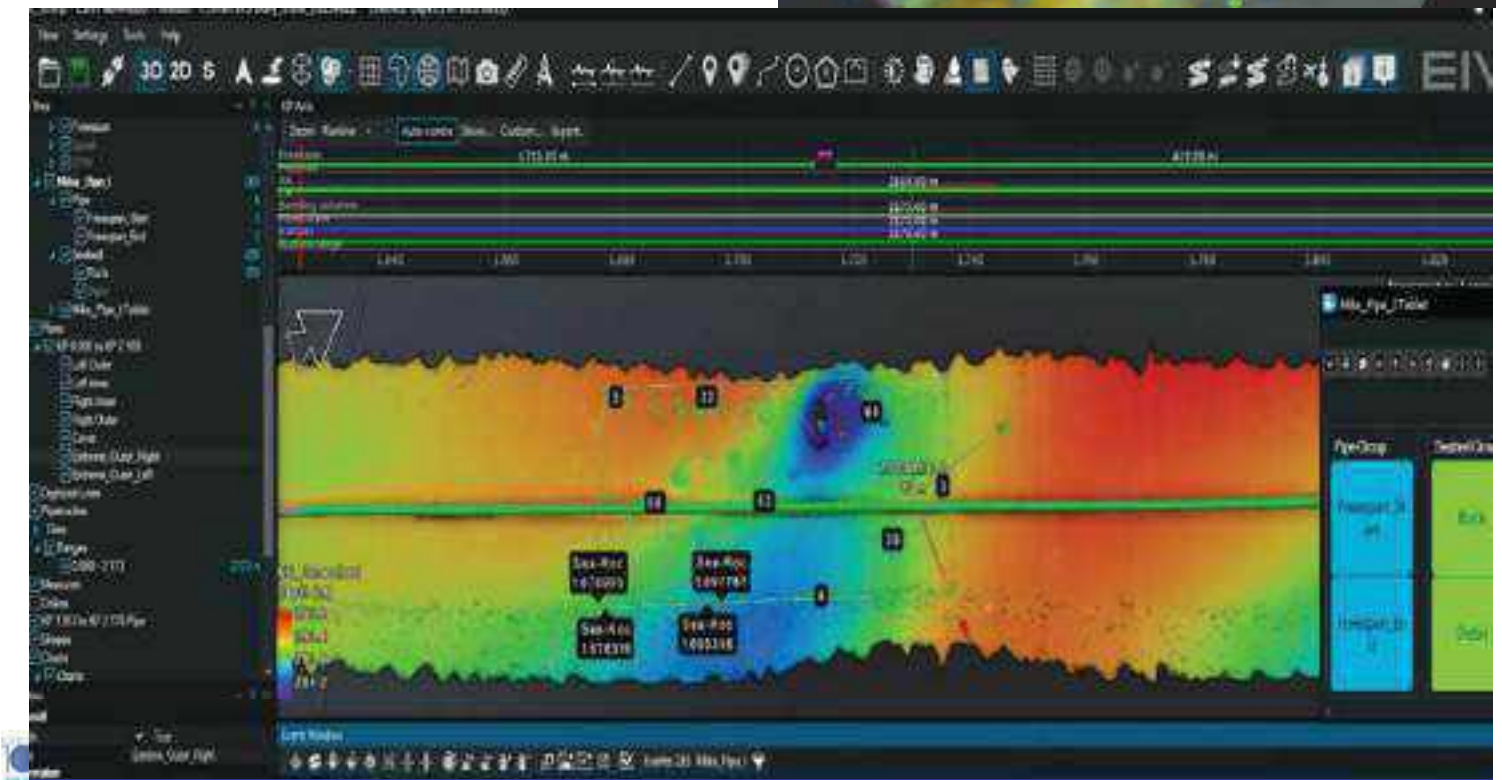
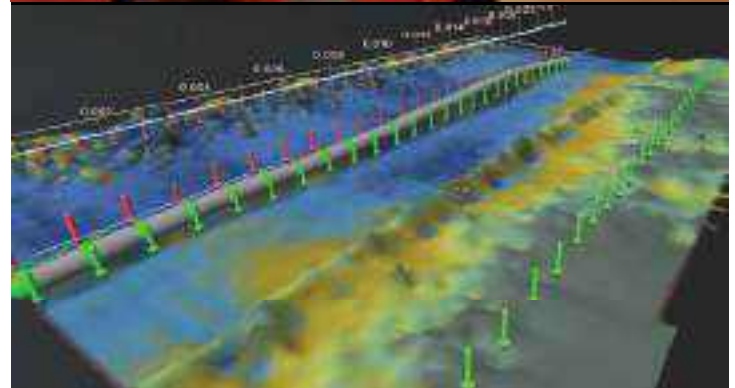
# DATA PROCESSING, ANALYSIS & INTERPRETATION

Our Data Processing Services include Real-time Data Processing and Interpretation of 2D & 3D Bathymetric and Hydrographic Data ranging from single channel to advanced multi-channel using specialized software such as EIVA and Qinsy.

We carry out Bathymetric data processing, shipwreck data processing, Analogue survey data processing, Pipe inspection data processing, etc. for both onsite and remote operation.

We also carry out image processing and statistical modelling, identification of fault lines and landslide-prone areas.

We ensure accurate and transparent data reporting through comprehensive data collection and rigorous validation techniques. Our reports are clear and concise, designed for easy understanding by all stakeholders. This commitment helps us deliver reliable and insightful data for informed decision-making.





# UWILD SERVICES

Subsea100 Global Limited carry out Underwater Inspection in Lieu of Drydocking (UWILD) for inspection of marine vessel. By employing our divers or ROVs, we inspect the hull below the waterline to assess the vessel's condition, identify any damage, and ensure compliance with safety and regulatory requirements. With the capability of the defender, we carry out CP probe, Ultrasound, Scanning Sonar, Cavitation cleaning for UWILD purposes.

Subsea100 Team provide assets owner/operators a proven, responsive and cost-effective underwater inspection and integrity management partner. We deploy hi-spec Mini-ROV technology such as VideoRay pro4, pro5, Defender and Seatronics Valor Inspection ROV and tooling to inspect floating production assets, drilling assets and other offshore/marine vessels and structures. We pride ourselves on being agile, mobile, responsive, and extremely cost-effective, while delivering the highest inspection data.



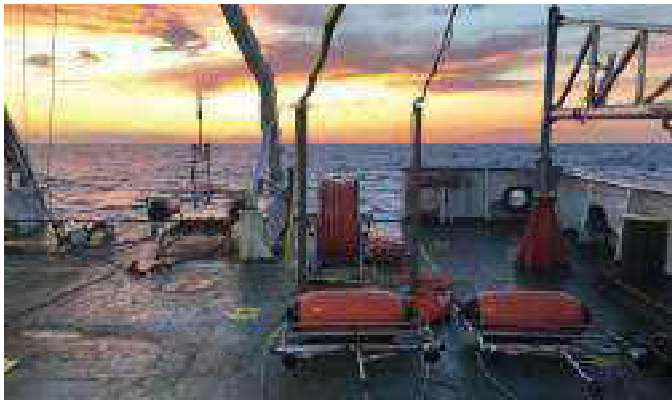


# SEISMIC SURVEY, UHR, NODES & STREAMERS

Our Ultra High Resolution) (UHR) seismic services find their application in a wide range of activities, which requires a detailed knowledge of the sub bottom structures and seismic stratigraphy.

Drill site surveys, pipeline/cable route surveys  
Offshore engineering projects/tunnels/bridges  
Wind farms foundation studies, Dredging for coastal, river and harbor projects, Sand searches-/sand supply projects, Horizontal drilling projects, and Scientific seismic research projects.

Our UHR multi-channel seismic services are often used for the detection of gas pockets in site surveys, and also to investigate shallow sub-bottom structures for large-scale offshore engineering projects such as tunnels and bridges.



Complete seismic processing and reporting services can be provided through our partners and our trained staff who have an outstanding and experience in the elaboration of all UHR seismic data and associated data.

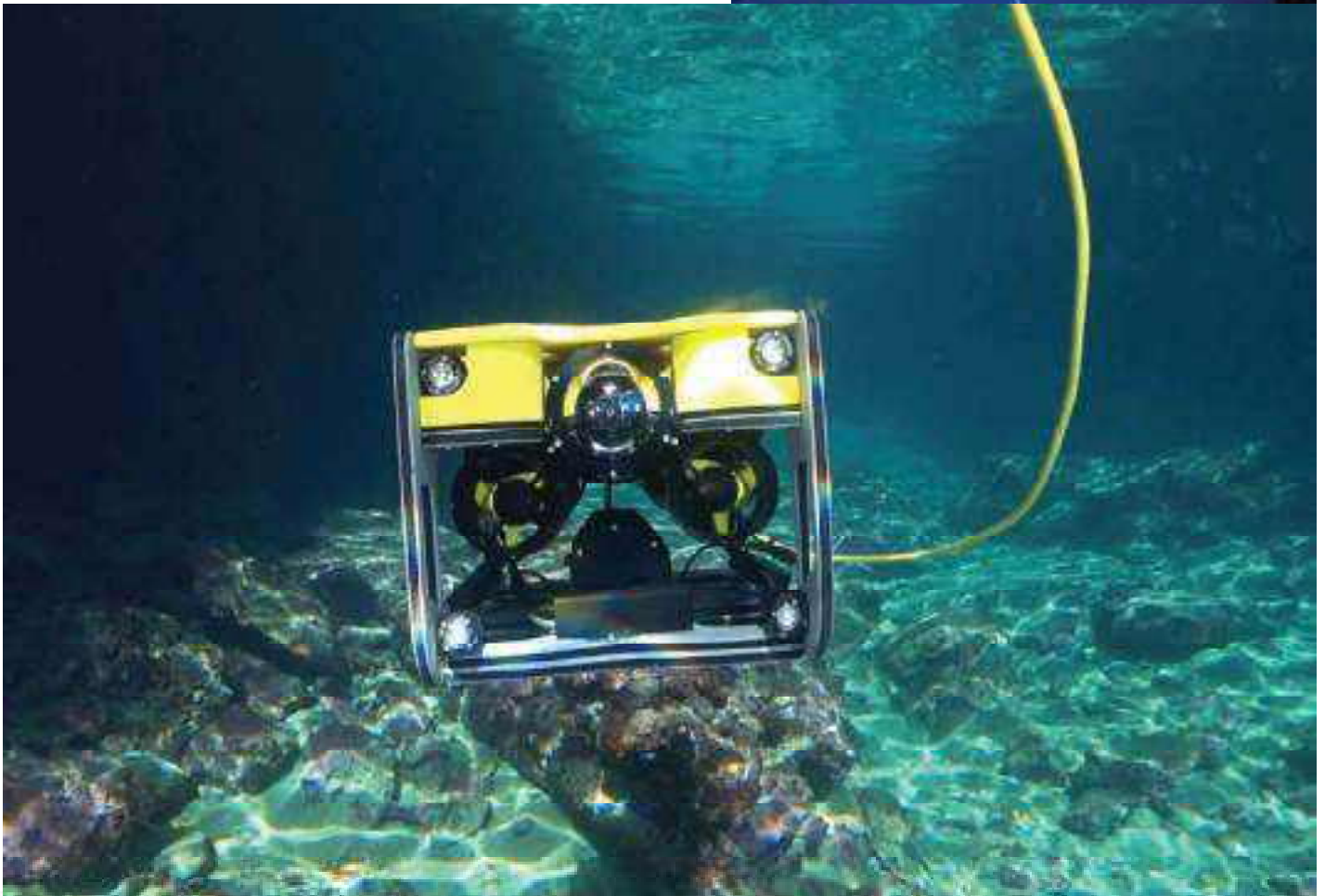
Our services also include: typical site survey data, Processing and interpretation of bathymetric data., Seismic data processing, from single channel to advanced multi-channel Seismic data interpretation from 2D to full 3D. We utilize industry-standard or proprietary navigation and positioning systems to support conventional 2D and 3D streamer data acquisition as well as ultrahigh resolution 3D systems such as P-Cable.



# DIVE SUPPORT

Subsea100 provides expert underwater diving services and also owns a vast range of subsea tooling, inspection and support equipment to deliver diving services on diverse projects. Our experienced team can advise on divers, equipment, mobilization, and ensuring smooth integration with your vessel's dive spread.

Our experience ranges from air diving, saturation diving, deep water ROV support (observation, intervention, and work class ROV support), and our track record includes subsea engineering, hyperbaric welding, and cathodic protection retrofitting for asset life extension. With our diving services supported by a fleet of dedicated dive support vessels, ROVs, and survey services, we provide a "one-stop shop" solution for your subsea projects.





# AERIAL SURVEY AND STRUCTURE MODELLING

Subsea100 Global can help you measure terrain, design or monitor construction site progress, create drainage systems, conduct power line maintenance and inspections, inspect solar farms and telecommunication towers, agricultural mapping, monitor pipelines, and manage assets as well as many more projects in a variety of industries.

We offer a range of UAV acquisition either to supplement vessel-based surveys or as stand-alone campaign. Our mapping services include:

- 01. Terrestrial Laser
- 02. Scanning
- 03. Photogrammetry
- 04. Thermal Inspection
- 05. Search and Recovery
- 06. BIM Modelling
- 07. SLAM LiDAR
- 08. CAD Modelling



We have utilized the Wingtra, M300, and M600 drones on multiple projects for lidar and photogrammetry. For terrestrial scanning, we have multiple scanners available: Leica RTC360, Faro S series, or Z&F 5016 Wingtra One. Gen II is the perfect aircraft for large area photogrammetry and long linear runs. Phoenix Lidar Systems setup will capture it all in any Lidar project no matter how big or small.



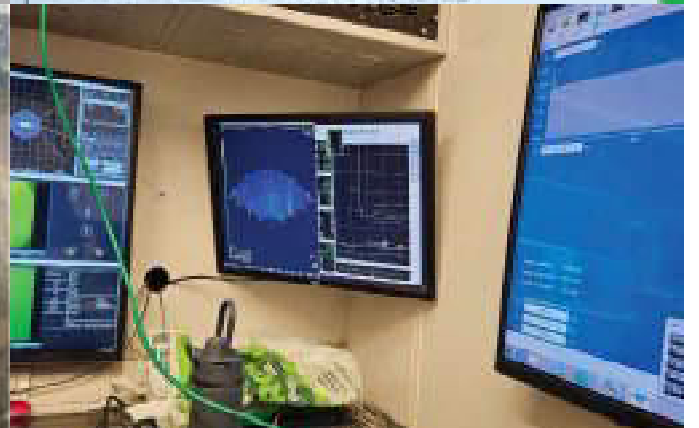
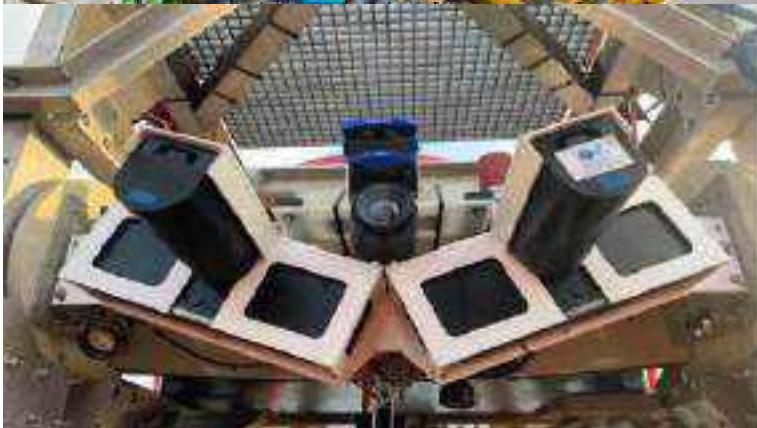
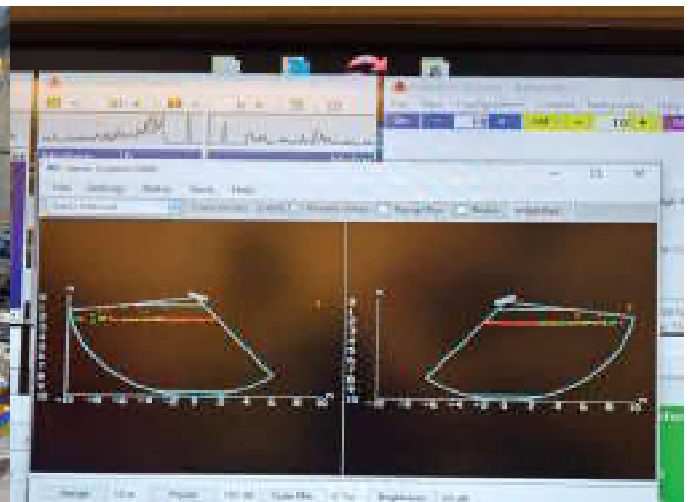


# AUV OPERATIONS

We have vast expertise providing AUV & HAUV support services for a variety of oilfield projects such as: Inspection, Repair, and Maintenance (IRM). We can provide a dependable solution for vehicle tracking and positioning by utilizing surface and subsea positioning equipment such as DGPS and USBL. In addition to positioning, we also offer inspection data acquisition and management.

Our Underwater Survey Services include:

- 01. Subsea video, 3D visualization and 3D metrology
- 02. Drilling support
- 03. Subsea Inspections, interventions and operations
- 04. Pipelines, cables, umbilicals, structures pre-lay and pre-engineering surveys.
- 05. Touchdown, installation monitoring, as laid, as-built, out-of-straightness, stability surveys, pre-installation and post installation survey Modelling



# ASV OPERATIONS

At Subsea100 Global Limited, we specialize in providing top-tier hydrographic survey solutions, including robust support for Autonomous Surface Vessels (ASV). ASVs are paving the way for efficient, accurate, and cost-effective marine surveying, especially in challenging environments. With our deep expertise, we ensure seamless integration, deployment, and operation of ASVs across a range of survey missions, making us a trusted partner within the industry.



## OUR SERVICES INCLUDES:

1. **Survey Planning and Design:** We tailor survey plans to maximize the capabilities of ASVs, ensuring precise data acquisition with efficiency.
2. **Deployment and Operation:** Our experienced marine professionals provide full support from deployment to real-time monitoring of ASV missions, ensuring compliance with safety protocols and seamless operation.
3. **Maintenance and Technical Support:** To maintain peak performance, we offer comprehensive maintenance, troubleshooting, and repair services for ASVs.
4. **Custom Integration:** We assist in integrating advanced technologies into existing ASV platforms, adapting to the specific requirements of coastal mapping, offshore exploration, and environmental monitoring.





# SUBSEA CONSTRUCTION SUPPORT

Our company provides specialized subsea construction support services, leveraging cutting-edge technologies like Remotely Operated Vehicles (ROVs) and other advanced tools. Our expert team delivers tailored solutions to ensure efficient, safe, and successful subsea construction projects.

Our Subsea Construction Support Services Include:

1. We provide shallow and deep water ROV operations for subsea construction, inspection, and maintenance tasks.
2. We conduct thorough subsea surveys and mapping to identify potential hazards, optimize installation routes, and ensure compliance with regulatory requirements.
3. We offer comprehensive support for subsea construction projects, including equipment setup, data acquisition, and data processing.
4. We provide Inspection, Maintenance, and Repair (IMR) services for subsea infrastructure, ensuring optimal performance and extending asset lifespan.





# ACOUSTIC METROLOGY

At Subsea100, we specialize in the delivering precise acoustic metrology solutions for subsea infrastructure installations, leveraging Long Base Line (LBL) technology paired with fusion 2 software and compatt 6+. This advanced system allows us to achieve submillimeter accuracy in positioning and aligning underwater structures, such as pipelines, manifolds, and risers. By using acoustic metrology, we ensure that all subsea assets are installed with the highest level of precision, reducing operational risks and enhancing the overall reliability of marine projects.

## PRECISE ALTITUDE OF INSTALLATION ASSETS

Our expertise in LBL positioning enables Subsea100 to determine the exact altitude and orientation of the Installation assets with unmatched precision. We deploy seabed transponders that provide accurate spatial data, Facilitating the optimal placement of subsea structures. This approach minimizes the chances of misalignment, improves installation efficiency, and ensures the long-term stability and performance of the assets we install.



# STATIC & DYNAMIC LIDAR OPERATION

## FIELD MAPPING & ASSET INSPECTION

Using our Dynamic LiDAR solution, we can provide highly detailed 3D map with geolocated assets that pinpoint interconnecting cables and hydraulic lines.

We have several proven fast data collection methods for identifying leaks of production or commissioning fluids while in motion over well and manifolds. This capability provides the potential for early signs of failure awareness or delayed startup commissioning rather than the more serious failed pressure test.

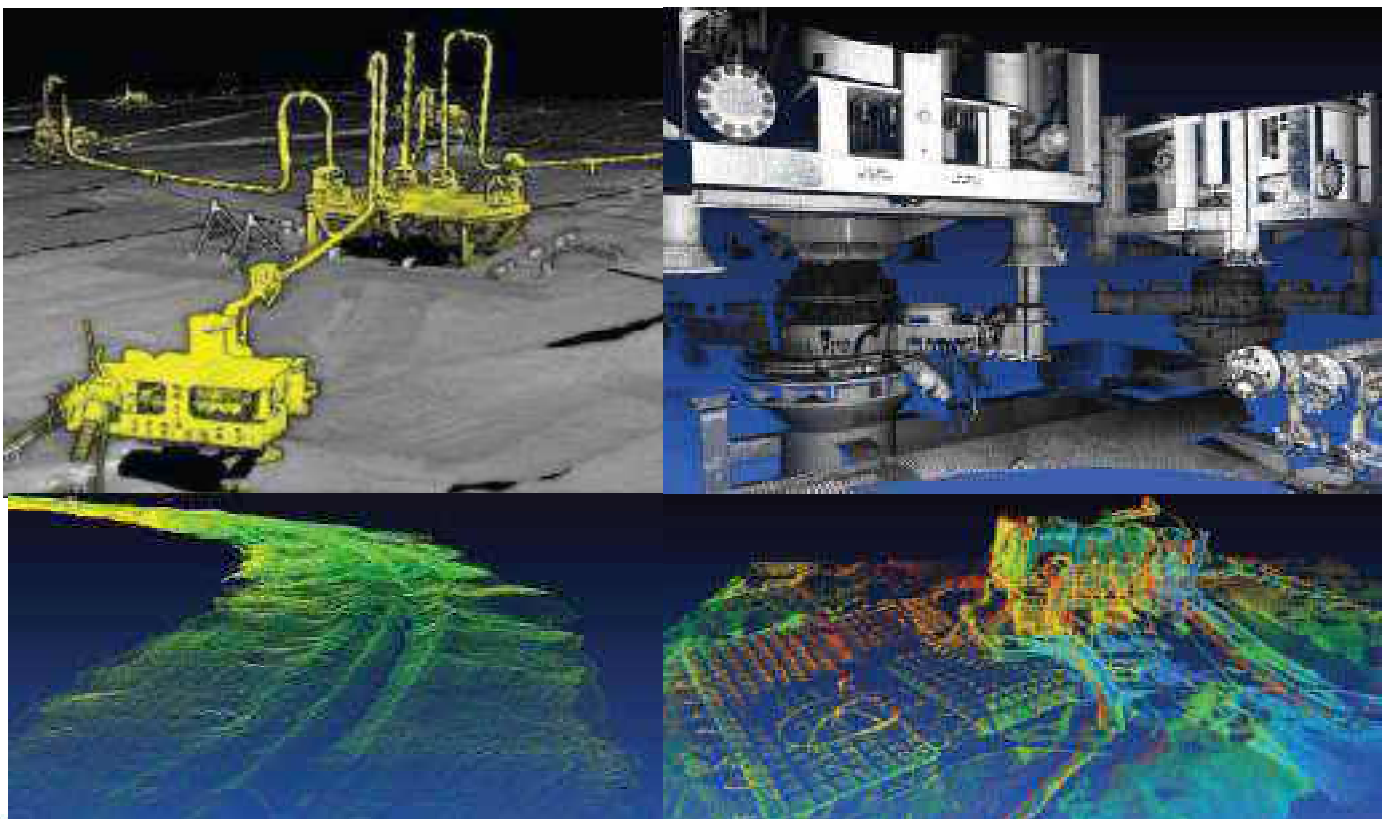
## BENEFITS OF THE SUBSEA LIDAR

- Unparalleled accuracy in subsea imaging and mapping.
- As-found Mattress Installation using Lidar in 3-dimension.
- Faster turnaround of project data.
- Increased safety to assets due to zero exposure to damage.
- Decreased disruption of project environment "Touchless". Create Baseline Point Cloud Maps for annual Vibration and movement displacement movement/settlement comparison.

## SUBSEA LIDAR METROLOGY (HUB TO HUB)

### PIPELINE CURVATURE ANALYSIS AND ANGULAR MEASUREMENT

We offer cutting-edge Subsea LiDAR Analysis services to support pipeline integrity management. By leveraging advanced Light Detection and Ranging (LiDAR) technology, we provide high-resolution 3D models of subsea pipelines, enabling accurate pipeline curvature analysis and angular measurement.

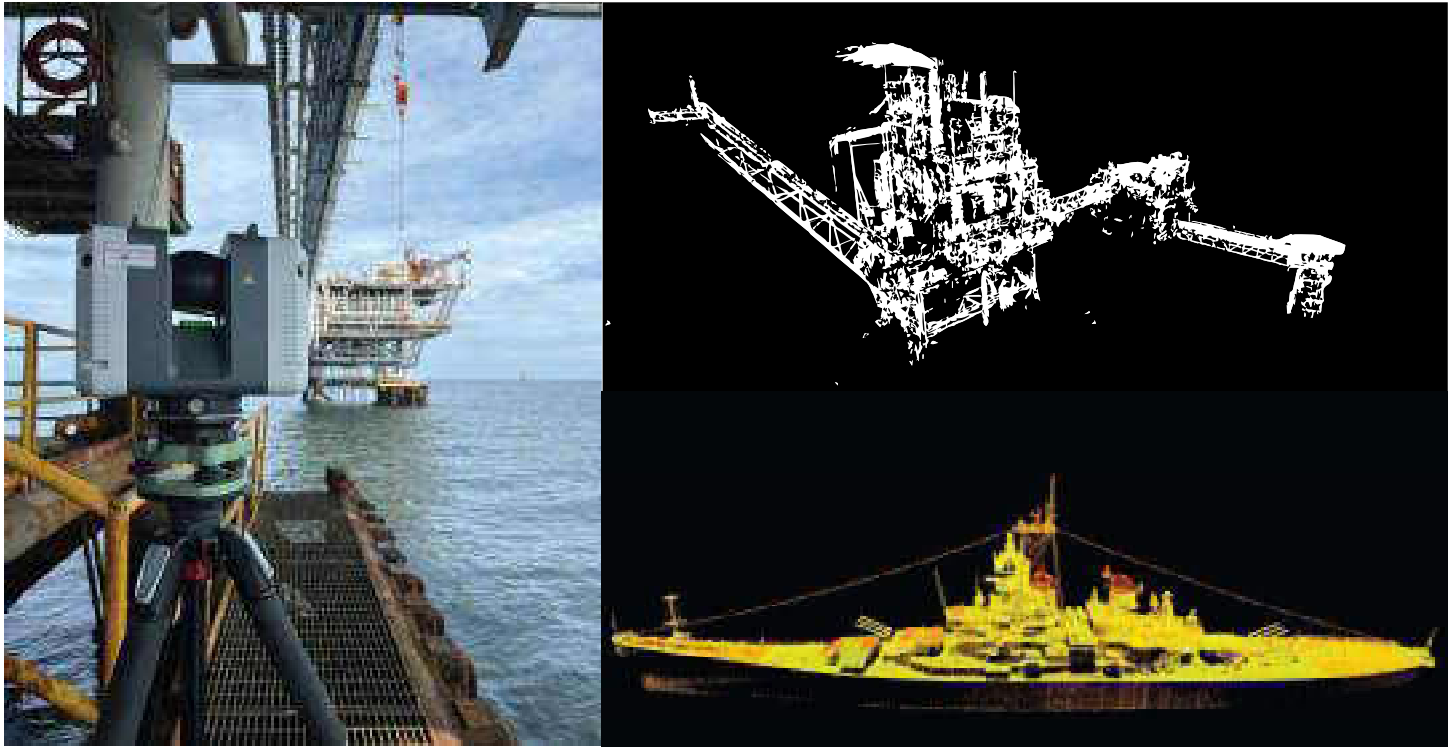




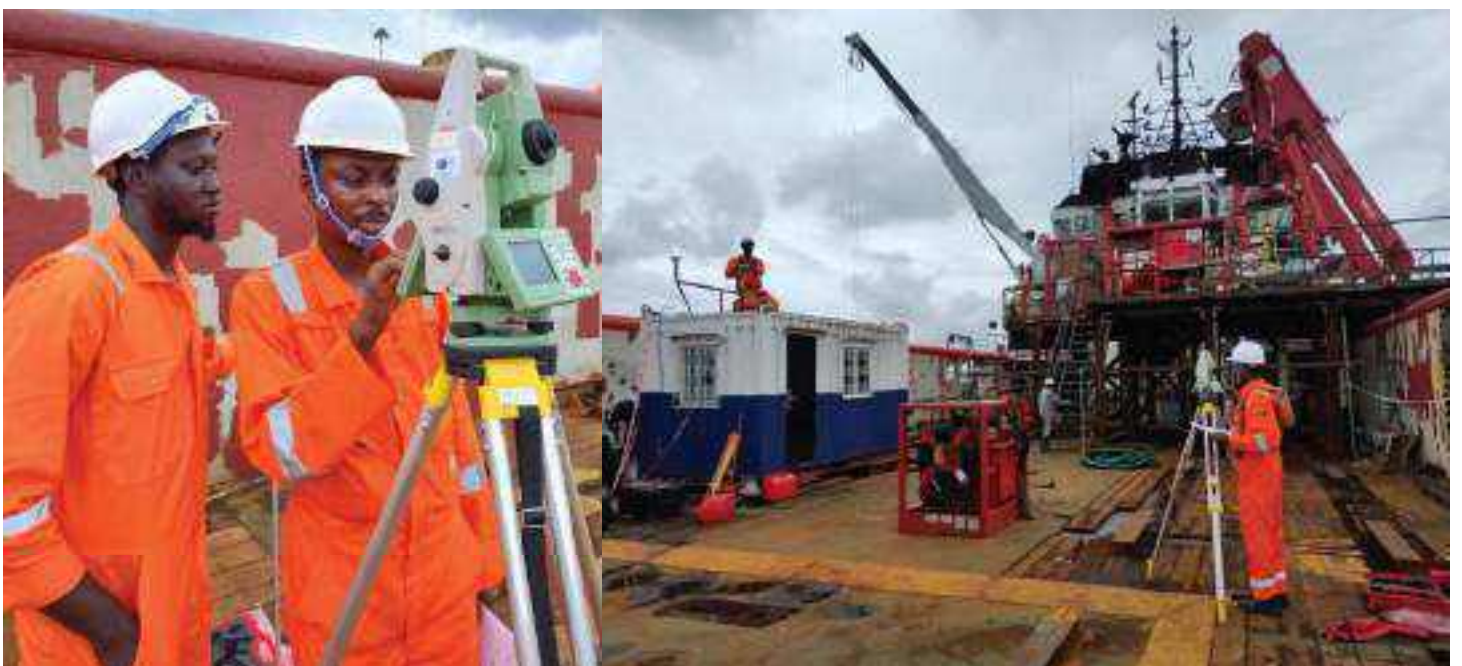
## 3D LASER SCANNING & DIMENSIONAL CONTROL

We specialize in providing advanced 3D laser scanning and dimensional control services. Our cutting-edge technology enables us to capture precise and detailed 3D representations of physical objects and environments.

3D Laser Scanning offers high accuracy and efficiency in capturing spatial data. By using laser pulses to measure distances, we generate detailed point clouds that can be used for creating accurate models, verifying as-built conditions, and supporting reverse engineering processes.



Dimensional Control ensures that the dimensions of structures and setups align with design specifications. This service involves precise measurement techniques to ascertain the exact dimensions and geometry of components and assemblies.







Subsea100 Global Marine Survey Team Carrying Out Vessel Inspection and Valuation

## MARINE WARRANTY SURVEY (MWS)

Subsea100's main responsibility is to provide the maritime, oil, and gas industries with specialized and technically sound marine solutions through efficient services. Our Marine Warranty services commonly cover design assessments and on site supervision, generally concern with the following types of marine operations:

- Marine Offshore Consultancy
- Offshore and Marine Inspection and Audits
- FSO / FPSO Audits
- Vessel Owning and Chartering
- Owner's Representative
- Rescue Operations

# INSPECTION SERVICES

## NON-DESTRUCTIVE TESTING (NDT)

NDT is also known as Non-destructive Evaluation (NDE) and Non-destructive Inspection (NDI). The process allows materials to be evaluated without destroying or changing their properties.

NDT is intended to assure the long-term viability of your oilfield assets.

We have substantial experience utilizing the newest technologies that we make available to our customers making the most difficult projects a walk in the park.

## CONVENTIONAL NDT SOLUTIONS

Our conventional NDT inspection methods include the following:

- Ultrasonic Testing
- Eddy Current Testing
- Magnetic Particle Inspection (MPI)
- Visual Inspection
- Cathodic Protection
- Thermography
- Dye Penetrant Testing
- Borescope
- Radiography Inspection
- Leak Test
- Vibration analysis



## ADVANCE NDT SOLUTIONS

We offer the following advanced NDT inspection solutions:

- Digital Radiography
- AUT
- Alternating Current Field Measurement (ACFM)
- Magnetic Flux Leakage (MFL)
- Inspection under Insulation (CUI) / Pulsed Eddy Current Test
- Phased Array Ultrasonic Testing (PAUT)
- Internal Rotary Inspection System (IRIS)
- Time of Flight Diffraction (TOFD)
- Remote Field Eddy Current Test (RFT)
- B- Scan & Nano Scan Test for Elbow





# ROPE ACCESS

In the Marine & Offshore Industry, application of rope access includes Hull Thickness Gauging, Close-up Inspection of vessels using CCTV system, Lifting Gear Inspections, Anode Replacement, Derrick & Crane Inspections, Conventional & advanced Non-Destructive Testing (NDT) techniques, Structural Condition Surveys, Maintenance and Mechanical jobs.

At Subsea100, we have a team that has been deployed on a number of projects. These projects have been safely carried out with Zero LTI.



We offer a complete solution for underwater inspection comprising of preparation, offshore execution, and final reporting tailored to best-fit client specifications and timescales. We understand the challenges and then apply the best techniques (alternating current field measurement, eddy current testing, or ultra-sonics) depending on our clients' needs.

## CATHODIC PROTECTION

We provide a comprehensive range of cathodic protection services to protect and maintain the integrity of client assets.

These include project planning and coordination, offshore data acquisition, processing, and reporting.



PIPELINE INTEGRITY: LOCATE BURIED PIPELINE

Accurate site information is essential for successful offshore positioning.

An exposed cable or a free-span pipeline can easily result in a costly breakage, so Subsea100 Global provides a range of suitable methods for conducting route inspections.

Combined with time series analysis, we can visually demonstrate protection requirements due to currents, tides and movement of sediment.

We deploy specialized equipment such as ROVs for detecting, tracking, and mapping using Multi-beam, Side Scan Sonar and under-water videos to follow the route as accordingly and a remotely operated crawler for shallow water environment.

Subsea Hundred Global carries out pipeline inspection surveys to detect: freespans, damage, defects, leaks, erosion or pipeline movement, required innovative technology and experience.



PIPETRACKER COILS



PIPETRACKER ELECTRONICS BOTTLE



# ASSET INTEGRITY MANAGEMENT

To prevent major accident and environmental hazard events, it is essential that the integrity of systems and hardware is maintained throughout the lifetime of all assets. To achieve this, a systematic approach is required to identify all potential degradation threats and ensure barriers are in place, effective, managed, and monitored.

We have a very experienced team of integrity engineers and technical staff who fully understand the importance of implementing bespoke, practical, and effective management frameworks for asset integrity management.

## ABS VESSEL INSPECTION

Recognized by the American Bureau of Shipping and awarded approved service provider status to conduct Hull Gauging to check the watertight integrity of the ship by inspecting the following areas of the ship:

- Close-up survey of the structures such as Shell, frames, bulkheads.
- Thickness measurement of hull
- Inspecting and Testing of Cargo Tanks
- Inspecting and Testing of Ballast Tanks
- Inspection and Testing of Hatch Covers and Coamings
- Inspecting and Testing fuel tanks, side and double bottom Tanks
- Inspecting Tanks On Board Ships



# OFFSHORE RENEWABLE ENERGY

We provide a range of services to address the expanding need for offshore energy, including traditional oil and gas, as well as renewables such as: wind, wave, and solar energy.

Our clients benefit from our application of machine learning, remote access and advanced processing techniques.

Our experts understand the seabed and sub-seabed risks to your offshore energy project throughout its lifecycle and will apply a thorough understanding of your project objectives to design effective hydrographic, geophysical, and geotechnical site investigations. we also provide a cost-effective and efficient risk- based approach to mitigation Unexploded ordnance (UXO).

Our Services includes:

- Assessment of offshore sites and ground conditions, as well as early feasibility studies for offshore wind farms.
- Cable trenching, burial and protection assessments.
- Development and maintenance of geological and engineering 3D ground models for offshore wind farms.
- Geotechnical interpretive reporting (GIR)



## GEOGRAPHIC INFORMATION SYSTEM (GIS) SERVICES

We take your industry to the next level with our Geographic Information System (GIS) Services.

### GIS DATA ANALYSIS AND MAPPING

At Subsea100 Global we offer a wide range of tasks and applications related to managing, analyzing, and visualizing geospatial data.

#### DATA ANALYSIS

1. Hotspot Analysis
2. Precision Agriculture
3. Mineral Exploration
4. Land Use/Land Cover Analysis
5. Suitability Analysis
6. Hydrology Analysis





## CARTOGRAPHIC MAPPING

1. Street Guide Map
2. Topographic Mapping
3. Cadastral Mapping
4. Web-Mapping and Dashboard
5. Project Evaluation and Monitoring

## DATA COLLECTION AND MANAGEMENT

1. Creation of Geodatabase and Management
2. Land Parcel Delineation and Management
3. GPS Coordinates
4. Data Crowdsourcing



## ONBOARD REPORT COORDINATION

We excel in Onboard Report Coordination, ensuring seamless communication and accurate documentation during offshore and marine operations. This process is critical for maintaining operational efficiency, safety, and compliance with regulatory standards.



## PRE MOBILIZATION MEETING

At Subsea100, we believe that the safe delivery of successful projects depends solely on thorough project management and engineering proficiency.

Our project management team have extensive experience and expertise in planning, engineering and design, offshore construction, offshore installation, commissioning as well as decommissioning.

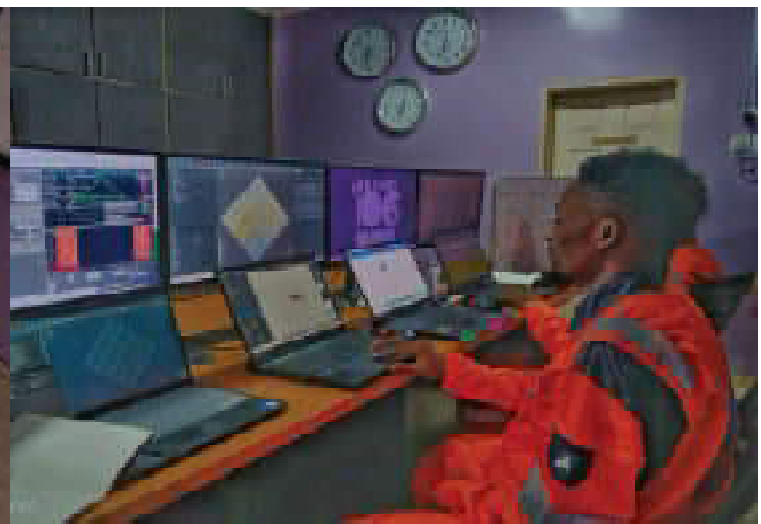
As we aim to proactively develop this capability, we aim to significantly add value to every phase of our projects.



## REMOTE SUPPORT IN REAL TIME

We provide Remote Support in Real-Time to ensure uninterrupted operations, regardless of location.

Our experts offer immediate assistance and troubleshooting for offshore and onshore teams, leveraging advanced communication tools and remote-access technology.







# OUR EQUIPMENTS

SUBSEA100 GLOBAL LIMITED holds various survey equipment (Hydrographic and Land) in stock, for rental and Job execution purpose. Various end-users have selected our equipment as the best currently available in the Industry. In response we continue to develop new methods to satisfy their demands.



## EDGETECH 2205

Side scan Sonar +  
Sub-Bottom Profiler +  
Bathy (4000m depth  
rating)



## MINI ROV

VideoRay Mission  
Specialist Defender  
(Depth rating up to  
1000m)



## Gaps M7

High performance  
USBL positioning &  
communication  
system (4000m depth  
rating)



### G-882 MAGNETOMETER

Geometrics' G-882  
Marine Magnetometer  
(2700m Depth rating)



### WAM-V 22

WAM-V technology to an  
expanded field of opera-  
tions.  
Speed up to 15kn  
Endurance up to 72hrs



### R2 SONIC 2024

Sonic™ 2024-V  
Multibeam Echosounder (4000m  
depth rating)



### TSS DMS-05

TSS Dynamic Motion  
Sensors



### EDGETECH 3400

3400-OTS  
POLE-MOUNTSUB-BOTTOM  
PROFILER  
(100m depth rating)



### EDGETECH 4200

4200 Series SideScan  
Sonar System  
(2000m depth  
rating)



### C-NAV 3050

C-Nav3050@  
GNSS Receiver



### APPLANIX POS MV

Trimble Applanix@  
POS MV  
OceanMaster



### KONGSBERG MS100

Sector Scan for Touch  
Down Monitoring (TDP)  
with Tripod (2000m  
depth rating)





### MIDAS SVX2

Valeport-MIDAS-Multi-Parameter CTD



### PIPE LOCATOR

Leica Detect DD130 Locator



### ECHOTRAC E20

A portable, compact and robust echosounder. (Depth rating up to 6000m)



### TSS MERIDIAN

Teledyne-TSS-Meridian-Standard-Gyrocompass



### LEICA TS12

Leica Geosystems Robotics Total Station



### VS100 HEMISPHERE

Vector™ VS1000 GNSS Receiver Position & Heading



### SONADYNE LBL

Wideband Sub-Mini 6+ Transponder/Responder



### DRAGONFLY

Dragonfly UASDrone Photogrammetry + Lidar



### 900 Series Mini Beacons

Applied Acoustics 919 Mini Beacon (4000m Depth rating)



### **iWand**

Transponder test and configuration unit.



### **Mini-Ranger 2 USBL**

Underwater tracking and communications system



### **VALOR ROV**

Valor ROV with Discovery Stereo camera. depth rating up to 4000m



### **Sound Velocity Profiler**

Valeport Swift Sound Velocity Profiler (SVP)



### **TSS660 Pipe Tracker**

Teledyne TSS660 Hydropact subsea pipe tracking system



### **R2 SONIC 2024**

Dual Multibeam Transducers (4000m depth rating)



### **R2 SONIC 2024**

Dual Multibeam Transducers (4000m depth rating) placed in water



### **LEICA RTC 360**

High-speed 3D laser scanner with integrated HDR spherical imaging system



### **LEICA SCANSTATION P50**

Highest quality 3D data and HDR imaging at an extremely fast scan rate